



The Ottawa  
Bonsai Society

Société de  
bonsai d'Ottawa

In this Issue  
Dans ce numéro

Steering Group — Conseil directeur	1
This month — Ce mois-ci	2
New Members and — Nouveaux membres	2
Notice of Annual General Meeting — Avis d'assemblée générale annuelle	2
Spring Event Calendar — Calendrier d'activités du printemps	3
Bonsai Development Workshop pictures — Atelier sur la formation d'un bonsai en photos	4
Publicity — Publicité	5
Meeting Location — Lieu des rencontres	6
Executive — Exécutif	6
Contact Us — Nous joindre	6

# NEWSLETTER - BULLETIN

## May - Mai 2012

Volume 27, no. 08

Dedicated to promoting interest and understanding of bonsai.  
Faire mieux connaître et comprendre l'art du bonsai.

### Steering Group Notes - Le Mot de votre Conseil Directeur From the April program.

Announcements:

Duart Crabtree advised Members that this year's Ikebana Exhibition, by the Ottawa Chapter of Ikebana International, will be open to the public at the Museum of Nature from April 19th to 22nd. Their compositions are always exquisite. Duart also mentioned that John Gummeson agreed to make the new curtain supports for the 2012 OBS Annual Show and reminded Members the publicity subgroup needs volunteers to help cover the English media.

We learned at the Meeting that Penjing Master Cheng had to cancel his visit to Canada and the events in May planned by SBPM and SBPL are now cancelled. Yvon Bernier will advise OBS Members by e-mail.

Vianney Leduc reminded Members of the upcoming intermediate and free-form

workshops before introducing lan McRae's a presentation for the evening program on developing bonsai from shrubs.

lan explained that shrubs are simply woody plants with multiple stems, or canes. The canes rise from a shallow root mass which can be developed for basally dominant bonsai compositions by pruning the canes.

To illustrate how ordinary shrubs can make beautiful bonsai compositions, lan brought a Forsythia ovata 'Ottawa' with a huge root mass that he removed from the garden of the May Court Residence. (How often we find that a garden plant to be discarded may be good pre-bonsai material!). Forsythia, as a shrub or a bonsai, is a delightful harbinger of spring. Unfortunately rather large leaves follow the yellow

flowers and this bonsai was spectacular for a short time.

Potentilla fruticosa 'Abbotswood' is shrub with small leaves and flowers that last from late spring into fall. lan referred to material from the website of Lakeshore Bonsai with 'step by step' details for developing shohin-sized Cinquefoil bonsai from tired old shrubs. Interested Members should check <http://lakeshorebonsai.wordpress.com/tag/shrubby-cinquefoil/>

Many shrubs with small leaves and attractive flowers or fruit make attractive bonsai; including, Magnolia stellata, Illex, Cotoneaster, and Honey Suckle as described in Bonsai from the Wild by Nick Lenz. The second edition of Lenz's classic work is available from the OBS library.

(Continued on page 2)

NEXT  
MEETING

Join us on  
Monday  
May 28, 2012  
at 7 p.m.



PROCHAINE  
RENCONTRE

Le lundi  
28 mai 2012 à  
19 h



*(Continued from page 1)*

For his finale, Ian brought an enormous mass of Honey Suckle roots. Ian had been trying to eliminate this shrub from his own garden for years without success by radical pruning of the canes. Finally he just dug the whole root-mass up. At the Meeting, Ian proceeded to tear the compartmentalized root mass apart with his bare hands, yielding many 'ready-to-pot', shohin-sized bonsai with dramatic trunk movement which he generously shared with Members.

Thank you, Ian. For most of us, that was a real 'eye opener'!

*Duart Crabtree*

THIS MONTH - CE MOIS-CI

The whole evening will be dedicated to a free form workshop.

Members who would like to get advice on their trees and work on them with the help of experienced members should bring their trees. We can help with repotting, wiring, design and regular maintenance! Bonsai wire will be available and there will be soil for sale.

*Vianney Leduc*

NEW MEMBERS

A warm welcome is extended to :

Audrey Heppleston  
Marlene Smith

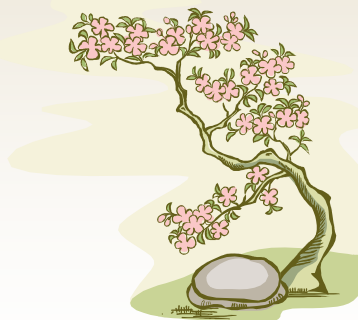
NOUVEAUX MEMBRES

Nous souhaitons la bienvenue à :

NOTICE OF ANNUAL  
GENERAL MEETING  
JUNE 18<sup>th</sup>, 2012

At next month's meeting, on June 18, we will be holding our Annual General Meeting during which a financial statement will be presented and members will be called upon to elect the Officers of the Society for 2012/2013.

AVIS D'ASSEMBLÉE  
GÉNÉRALE ANNUELLE  
LE 18 JUIN 2012



Lors de la prochaine rencontre le 18 juin, nous tiendrons notre Assemblée générale annuelle au cours de laquelle le bilan financier de l'année écoulée sera déposé et l'élection des membres de l'exécutif pour 2012/2013 sera tenue.

## EVENING OPEN BONSAI WORKSHOPS

Again this year, the Ottawa Bonsai Society will be holding four special evening workshops where members will have the opportunity of doing work on their trees with the assistance of senior members of the Society. This will be the occasion to repot, wire, prune or pinch your trees or even to receive guidance in their styling or restyling. Bonsai wire will be available and tools will be shared among participants as needed but you will need to bring your own pots and soil if you wish to repot trees in new containers. A small quantity of soil will be available for those who have none. Those workshops will be held in Building #72 on the following dates:

Monday, May 28 7 to 9 p.m.  
(as part of regular monthly meeting)  
Monday, June 4 6 to 9 p.m.  
Monday, June 11 6 to 9 p.m.  
Monday, June 18 7 to 9 p.m.  
(as part of regular monthly meeting)

## SOIRÉES D'ATELIERS LIBRES SUR LES BONSAÏ

À nouveau cette année, la Société de bonsaï d'Ottawa tiendra quatre ateliers spéciaux de soirée où les membres auront l'occasion d'effectuer du travail sur leurs arbres avec l'aide de membres expérimentés de la Société. Ce sera alors l'occasion de rempoter, ligaturer, tailler ou pincer vos arbres ou même de vous faire conseiller pour leur mise en forme. Du fil pour ligaturage sera disponibles et des outils seront mis en commun suivant les besoins, mais vous devrez apporter vos propres pots et le substrat nécessaire (terreau à bonsaï) si vous souhaitez rempoter des arbres dans de nouveaux récipients. Une petite quantité de substrat sera disponible pour ceux et celles qui n'en auraient pas. Ces ateliers seront tenus dans l'édifice #72 aux dates suivantes :

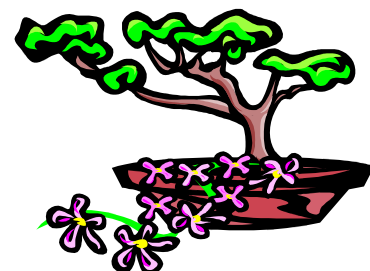
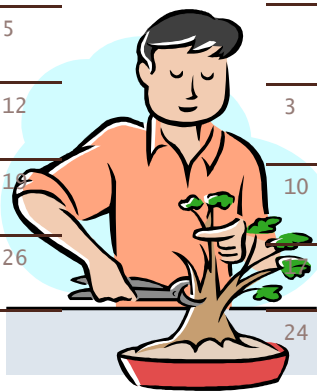
Le lundi 28 mai 19 à 21h  
(en tant qu'élément de la rencontre mensuelle)  
Le lundi 4 juin, de 18 à 21h  
Le lundi 11 juin, de 18 à 21h  
Le lundi 18 juin, de 19 à 21h  
(en tant qu'élément de la rencontre mensuelle)

### May 2012 Mai

SUN DIM	MON LUN	TUE MAR	WED MER	THU JEU	FRI VEN	SAT SAM
		1	2	3	4	5
6	7	8	9	10	11	12
13	14	15	16	17	18	19
20	21	22	23	24	25	26
27	28	29	30	31		

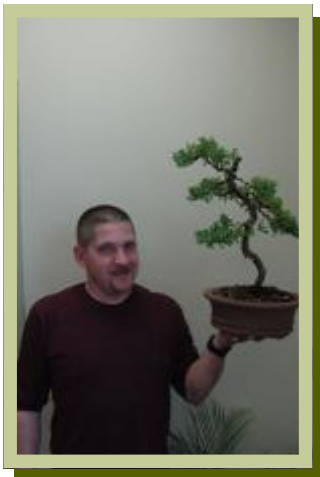
### June 2012 Juin

SUN DIM	MON LUN	TUE MAR	WED MER	THU JEU	FRI VEN	SAT SAM
					1	2
3	4	5	6	7	8	9
10	11	12	13	14	15	16
	18	19	20	21	22	23
	25	26	27	28	29	30



BONSAI DEVELOPMENT  
WORKSHOP PICTURES  
MAY 12, 2012

ATELIER SUR LA FORMATION  
D'UN BONSAÏEN PHOTOS  
LE 12 MAI 2012





In the beautiful Lanaudière region, north of Montréal, we invite you to visit our greenhouses and our collection of bonsai and penjing from China, Korea, Japan and Canada.

We give a 10% discount to Ottawa Bonsai Society members on pots, tools, wires, accessories and soil.

We are open Wednesday to Sunday from 10:00 a.m. to 4:00 p.m. Please call for an appointment to visit us. Guided visits are available at \$6 per person, which is refunded if you buy for \$50 or more. We now accept payment by debit cards as well as by MasterCard and Visa.

We have bonsai of all sizes, a large selection of pre-bonsai, as well as pots, accessories, tools, wire and soil.

We look forward to sharing our passion with you all!

Dans la belle région de Lanaudière au nord de Montréal, nous vous invitons à venir visiter nos installations et nos collections de bonsaïs et de penjings importés de Chine, de Corée, du Japon et du Canada.

Aux membres de la Société de bonsai d'Ottawa, nous offrons un rabais de 10% sur les pots, les outils, le fil à ligaturer, les accessoires ainsi que le substrat à bonsai.

Nous sommes ouverts du mercredi au dimanche de 10h à 16h. Si vous comptez nous visiter, il est préférable de nous en prévenir par téléphone. Des visites guidées sont disponibles à 6 \$ par personne sur réservation. Ces frais vous seront remboursés si vous achetez pour 50 \$ ou plus. Nous acceptons maintenant les paiements par le service de débit Interact ainsi que par MasterCard et Visa.

Nous avons des bonsaïs de toutes les tailles ainsi qu'un grand choix de pré-bonsaïs, de pots, d'accessoires, d'outils, de fil à ligaturer et de substrat.

Au plaisir de partager notre passion avec vous!

*Suzanne Piché & Robert Smith*

**BONSAÏ GROS-BEC**

40 rue Imbeault  
St-Alphonse-Rodriguez Qc  
J0K 1W0

(450) 883-1196 / [info@bonsaigrosbec.com](mailto:info@bonsaigrosbec.com) / [www.bonsaigrosbec.com](http://www.bonsaigrosbec.com)

## 2011 – 2012

### EXECUTIVE

### EXÉCUTIF

#### Treasurer Trésorier

Yvon Bernier

#### Librarian Bibliothécaire

Mike O'Connor

#### Secretary Secrétaire

Duart Crabtree

#### Director of Public Relations Directeur des relations publiques

Duart Crabtree

#### Editors Éditeurs

Yvon Bernier  
Charles Lacombe

#### Steering Group Conseil directeur

Yvon Bernier  
Duart Crabtree  
Vianney Leduc  
Barney Shum  
Gordon Williams  
Matt Yakabuski  
Mike O'Connor  
Paul Lauzon  
John Gummesson



#### Meeting Location

We meet at the Experimental Farm, (Central), in building #72.

Enter at the traffic circle located at the intersection of the NCC scenic drive and Prince of Wales drive, the main entrance to the Arboretum.

Where the road divides, turn left, and follow to Building #72 (a short distance).

Parking is available on the north and south sides of the building. The building entrance is on the east side, i.e., the road side.

#### Lieu des rencontres

Édifice #72, Ferme expérimentale centrale

Pour vous y rendre, prenez la direction sud sur la promenade Prince of Wales jusqu'au rond-point à l'intersection National Capital Driveway et Prince of Wales (qui est aussi l'entrée principale de la Ferme expérimentale et de l'Arboretum), où vous prendrez la direction Est menant à l'Arboretum.

Une courte distance plus loin, à la première fourche, prenez la route de gauche qui mène directement à l'édifice #72 (vous verrez une affiche juste en face de l'édifice, de l'autre côté du chemin, qui dit «les amis de la ferme».

Le stationnement est situé de part et d'autre de l'édifice.



Contact Us – Pour nous joindre

PO BOX 4254 STN E  
OTTAWA ON K1S 5B3

[www.ottwabonsai.org](http://www.ottwabonsai.org)

[ycbernier@videotron.ca](mailto:ycbernier@videotron.ca)

#### Map to OBS meeting in building #72

Carte routière menant aux rencontres SBO à l'immeuble N° 72

