



Newsletter/Bulletin January / Janvier 2010

Volume 25, no. 4

The
Ottawa Bonsai
Society /
Société de
bonsai d'Ottawa

25 years of the Ottawa Bonsai Society

Vingt-cinq années de Société de bonsai d'Ottawa

Steering Group Notes / Le Mot de votre Conseil Directeur From the November program

This Issue

From Your
Steering
Group—Last
Meeting 1

OBS 2
Founded
25th October
1984

New 2
Members

Publicity 3

Meeting 4
Location

Steering 4
Group Info

Contact Us 4

There was an excellent turnout for the November meeting, the last membership meeting of 2009. Members indicated that they are very pleased with the new format of the newsletter and none had problems receiving and downloading the digital file from the website.

Creating bonsai from nursery stock

In recent meetings we have discussed collecting trees from the wild, but for many members this is not feasible.

Vianney Leduc opened the evening program with a presentation on creating bonsai from nursery stock. Joe Imbesi brought four superb San Jose Juniper specimens that he acquired at a year-end clearance of nursery stock. Joe's trees provided an illustration that the less attractive trees for landscaping can nevertheless show great potential for bonsai at reasonable cost.

Of a dozen or so of the most popular species for bonsai that are available at nurseries in our area, (such as San José Junipers, Amur Maples, Mugo Pines, and Canadian Larch), Vianney listed characteristics like hardiness, branch flexibility, tendency to bud back, and attractiveness of deadwood. He also mentioned characteristics that make species more challenging for bonsai—sensitivity to moisture level, brittleness, susceptibility to disease and to pests.

When looking at nursery trees in nursery pots, Vianney suggested that a bonsai enthusiast needs to look beyond the basic design principles and to try to imagine the trunk at many different angles; or imagine cutback to a branch to develop movement in another direction, and/or a thickened trunk.

Vianney discussed how dramatic trunk movement was achieved with a *juniper procumbens nana* by using cut back and radically changing its angle in the pot. He

showed images of trees that were pruned and left in the ground for five to ten years to thicken their trunks. The prospect of waiting 10 years for a trunk to thicken stimulated a lot of discussion from members who are retired.

This was an excellent presentation by Vianney, and it seems that we have enough interest for a follow up presentation on alternatives for thickening trunks for bonsai quickly!

Duart Crabtree





NEXT
MEETING
Join us on
Monday
January 18
at 7 p.m.

PROCHAINE
RENCONTRE
Le lundi
18 Janvier
à 19 h 00

By Myron Mech

In April 1984, I began teaching an 8-week Bonsai Beginner's Course at the High School of Commerce. Enrolled were Michael Piva, Barney Shum, Monica McElroy, Ian McRae and Cameron McPherson.

During the last class, we discussed the idea of forming a bonsai club. We worked all summer to write a Constitution and By-Laws. At this time, Brian Marcoux (McElroy) and Jean McPherson joined us.

On the 25th of October, the group paid memberships, and the eight members of the new Ottawa Bonsai Society had their official meeting. They discussed topics such as meeting place, future activities, advertising and additional funding. Membership fees were \$25 for singles and \$40 for families.

To help ease new members into bonsai, we began to supply pots and tools for sale. Each of the eight members contributed \$107.50 to fund a pot and tool purchase from Japan.

The first public meeting was scheduled for 25 January 1985, at 7 p.m., in a basement room of the Britannia United Church on Pinecrest Road.

That evening, thirty-five future bonsaists attended to learn about the Club and to watch a movie from the Brooklyn Botanical Garden on bonsai. Quite a remarkable turnout in the middle of the winter for the beginning of a new gardening club! And ten new people

signed up at this meeting. By the end of 1985, there were fifty-five members on the membership list. We were on our way.

Next Month: The First Year—1985



NEW MEMBERS /
NOUVEAUX MEMBRES



A warm welcome is extended

to:

Nous souhaitons la bienvenue

à :

Ismat Zeine

Chrissie Laroche & Eric Young

Joanne Devlin



OBS meetings regularly include demonstrations and lots of hands-on opportunities for members to learn by doing.

We look forward to seeing you at our next meeting.

BONSAI PUBLICITY PAGE

PAGE PUBLICITAIRE

Bonsaï Gros-Bec

In the beautiful Lanaudière region, north of Montréal, we invite you to visit our green houses and our collection of bonsai and penjing from China, Korea, Japan and Canada.

We have a large selection of pre-bonsai, as well as pots, tools, wires and soil.

We have Bonsai of all sizes

Juniperus sargentii

Ulmus parvifolia

Serissa foetida

and

Fiscus microcarpa

Bonsaï Gros-Bec

Dans la belle région de Lanaudière au nord de Montréal, nous vous invitons à venir visiter nos installations et nos collections de bonsaïs et de penjings importés de Chine, de Corée, du Japon et du Canada.

Suzanne Piché and Robert Smith

40 Imbeault

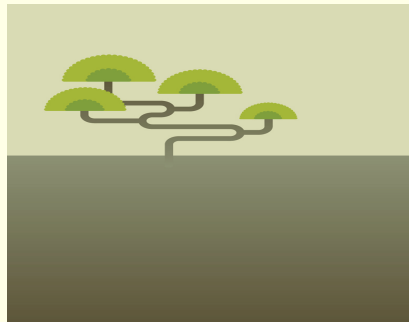
St-Alphonse-Rodriguez

PQ, J0K 1W0

450-883-1196

info@bonsaigrosbec.com

www.bonsaigrosbec.com



We give a 10% discount to OBS members on pots, tools, wires and soil.

We are open Tuesday to Sunday, from 10 a.m. to 5 p.m.

Please call for an appointment to visit us.

Guided visits are available for \$5 per person.

We regret that we are unable to accept payment by credit or debit cards.

We look forward to sharing our passion with you all!

Aux membres de la Société de bonsaï d'Ottawa, nous offrons un rabais de 10% sur les pots, les outils, le fil à ligaturage ainsi que le substrat à bonsaï.

Nous sommes ouvert du mardi au dimanche de 10h à 17h.

Si vous comptez nous visiter, il est préférable de nous en prévenir par téléphone.

Nous n'acceptons pas les paiements par cartes de crédit ou de débit.

Des visites guidées sont disponibles à 5 \$ par personne sur réservation.

Au plaisir de partager notre passion avec vous!



Ottawa Bonsai Society /
Société de bonsai d'Ottawa

2009 / 2010

**Executive /
Executif**

Treasurer /

Trésorier

Yvon Bernier

Librarian / Bibliothécaire

Mike O'Connor

Secretary and Director

of Public Relations /

Secrétaire et directeur des

relations publiques

Duart Crabtree

**Editor-Designer / Éditeur-
dessinateur**

Sasha Saint-Aubin

French Editor / Éditeur

français

Yvon Bernier

Steering Group /

Conseil directeur

Yvon Bernier

Duart Crabtree

Vianney Leduc

Barney Shum

Gordon Williams

Matt Yakabuski

Mike O'Connor

Paul Lauzon

John Gummeson

Brian Ure

Meeting Location

We meet at the Experimental Farm, (Central), in building #72.

Enter at the traffic circle located at the intersection of the NCC scenic drive and Prince of Wales drive, the main entrance to the Arboretum.

Where the road divides, turn left, and follow to Building #72 (a short distance). Parking is available on the north and south sides of the building.

The building entrance is on the east side, i.e., the road side.

Lieu des rencontres

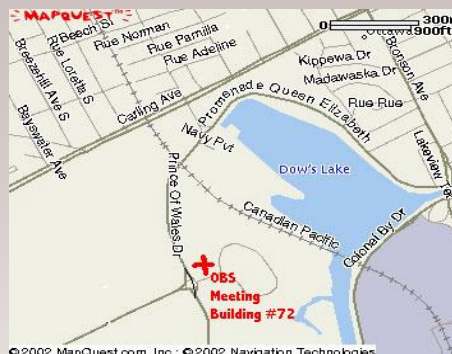
Edifice #72, Ferme expérimentale centrale—

Nos rencontres se tiennent à l'édifice #72 de la Ferme expérimentale centrale. Pour vous y rendre, prenez la direction sud sur la promenade Prince of Wales jusqu'au rond-point à l'intersection National Capital Driveway et Prince of Wales (qui est aussi l'entrée principale de la Ferme expérimentale et de l'Arboretum), où vous prendrez la direction Est menant à l'Arboretum.

Une courte distance plus loin, à la première fourche, prenez la route de gauche qui mène directement à l'édifice #72 (vous verrez une affiche juste en face de l'édifice, de l'autre côté du chemin, qui dit «les amis de la ferme».

Le stationnement est situé de part et d'autre de l'édifice.

Map to OBS meeting in building #72



Contact Us /

Pour nous joindre

P.O. Box 4254, Station E

Ottawa, Ontario

K1S 5B3

www.ottawabonsai.org

ycbernier@videotron.ca